



O'M Engineering
Electrical & Electronic
Consulting Engineers

2025 CORPORATE PROFILE



ABOUT O'M ENGINEERING

Where innovation sparks, trends are set, and electrical engineering reaches new heights!

Founded in 2019, we are a dynamic force with over six decades of combined experience, pushing the boundaries of what's possible in the realm of electrical engineering.

We are not just engineers; we're visionaries, crafting logical, cost-effective, and brilliantly efficient solutions that redefine industry standards. We don't just follow trends; we create them.

We are your go-to experts in a wide array of sectors, including residential, educational, commercial, healthcare, recreational, indigenous, and transit projects. Our versatility knows no bounds, and our innovative spirit thrives in every sector we touch.

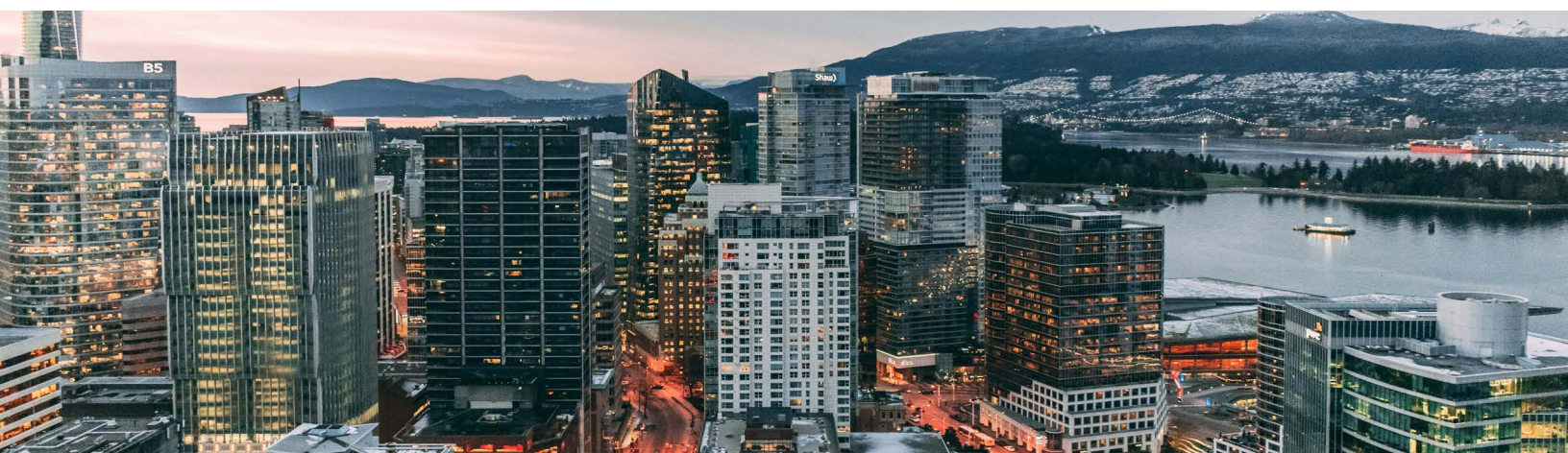
At O'M Engineering, we don't just engineer; we electrify possibilities!

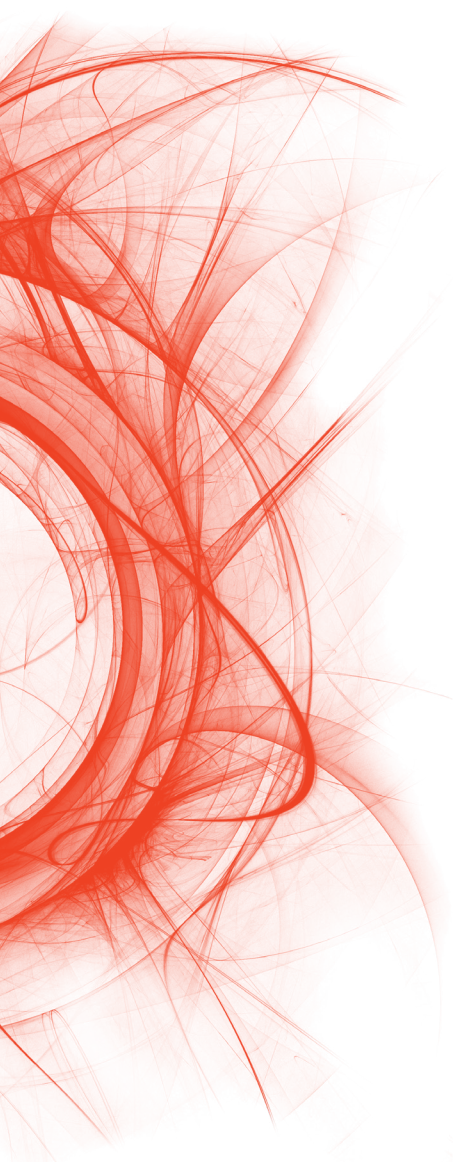
OUR EXPERTISE

At O'M Engineering, our commitment to excellence, innovation, and sustainability is at the cornerstone of everything we do. With a proven track record and a team of seasoned electrical engineers, we bring a wealth of experience and knowledge to the forefront of the industry.

Since its inception, O'M Engineering has embarked on a journey of excellence, collaborating on more than 900 projects throughout the beautiful British Columbia. Our dedicated team comprises of individuals with distinct areas of expertise, which converges together to fuel our passion for delivering outstanding project results.

Coming from all corners of the world, our team members have a rich tapestry of global experience and collective wisdom which consistently culminates in the achievement of exceptional results, time and time again!





ABOUT OUR BRAND

O'M

The ohm (Ω) is the unit of measure of electrical resistance.

Resistance is the aspect of an electrical system that makes it possible to see, hear and feel the effects of electricity.

The creative power of electricity is captured in our logo in the form of the light bulb which has become, since Thomas Edison's eureka moment in 1879, the universal symbol for inspiration.

OUR BRAND ESSENCE

POTENTIAL

Energy flows through a system when there is a difference of potential.

While resistance in the system stems flow, it makes energy seen, heard and felt.

O'M seeks to drive progress by enhancing this balance.



OUR PRINCIPALS

A Principal at O'M will be involved in each project from start to finish. This ensures a single point of contact for the client and a registered engineer with years of experience providing a personalized service.

OUR TEAM

Our team is made up of over 40 professionals, offering a wealth of industry knowledge and practical experience.

OUR BRAND VALUES

PROGRESS

Progress should not come at the cost of sustainability.

True progress should not simply be expressed, but it should be felt.

We believe that the challenge provided by resistance is what allows us to progress.

FLOW

Flow (being in the zone) is the mental state in which a person is fully immersed in and completely absorbed in a process. Flow makes inspired results possible.

We value flow in our work and in the end user's experience of the systems that we create.

NEVER GIVE UP

Tenacity (specific strength) is a material's strength-to-weight ratio.

O'M demonstrates a remarkable strength-to-weight by performing at a standard that belies its scale because we never give up.





OUR SERVICES

O'M Engineering is a premier provider of comprehensive electrical and electronic engineering solutions tailored to numerous commercial sectors. Our offering encompasses an array of critical services, including power distribution, innovative lighting and lighting controls, state-of-the-art fire alarm systems, emergency lighting solutions, code compliant exit signage, communications systems, security solutions, integrated audio-visual systems, and seamless connections to mechanical equipment. With a commitment to excellence, we ensure that businesses across various industries across BC receive top-notch electrical engineering support for their unique requirements.

GENERAL SERVICES

- Power Distribution
- Lighting and Lighting Controls
 - Fire Alarm Systems
 - Emergency Lighting
 - Exit Signage
- Communications Systems
 - Security Systems
 - Audio Visual Systems
- Connection to Mechanical Equipment

ADDITIONAL SERVICES

- Design Reviews
- Warranty Reviews
- Condition Assessments
- Code Compliance Consultation
- Due Diligence Reports
- Project Management

SUSTAINABILITY

In every project we undertake, the integration of energy-efficient technologies, renewable energy solutions, and environmentally friendly materials is central to our designs. Our commitment to sustainable building practices is highlighted by our team of LEED accredited professionals. Each team member is well-versed in ASHRAE standards, BC Hydro Energy Efficiency specifications, Photovoltaic designs, SolarEdge technology, and the intricacies of NetZero building principles. Furthermore, our team is well-equipped to undertake projects that demand adherence to Passive House standards, comply with LEED Gold specifications, and meet various Step Code Levels.



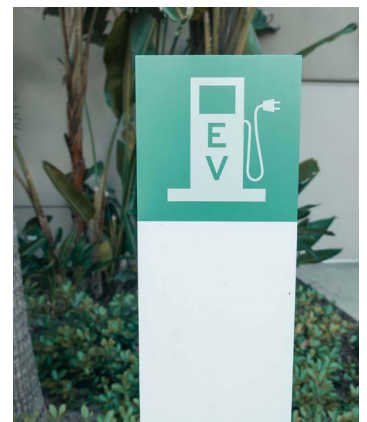
PHOTOVOLTAICS



LEED®



NET ZERO



EVSE SOLUTIONS

RESIDENTIAL



AEGEAN HOMES

Overview

The design and construction of a 4-storey, timber-framed, mixed-use, multi-family residential development.

Size

3,054 m²

Client

Anxin Projects



ALICE SAUNDERS AFFORDABLE HOUSING

Overview

The design and construction of 146 units of social housing for seniors.

Size

9,000 m²

Client

Brightside Community Homes



WEST 28TH + WILLOW

Overview

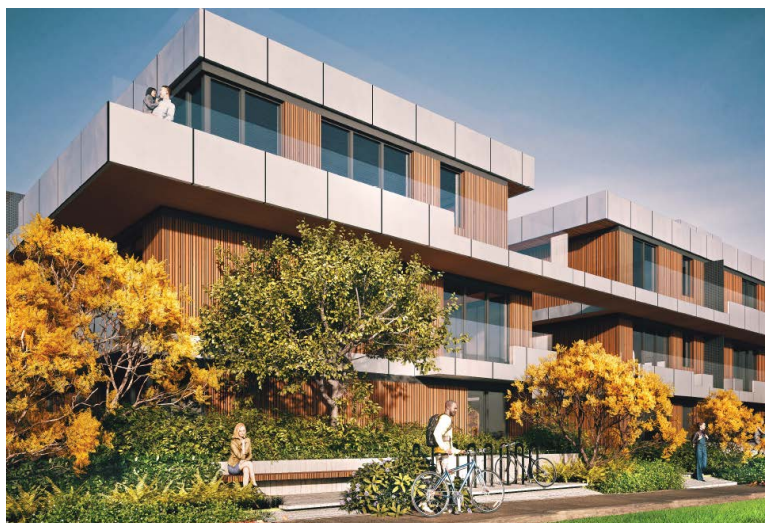
Four levels, with a rooftop, this proposed development will consist of 26 stacked townhomes.

Size

2,881 m²

Client

Anxin Urbanex Strategies



RESIDENTIAL



ELEMENTS

Overview

The design and construction of a 27-storey building with 195 units.

Size

16,251 m²

Client

Baydo Development Corporation



TELFORD TOWERS

Overview

The design and construction of two towers: one 50-storey mixed-use and one 20-storey rental development.

Size

31,918 m² & 10,771 m²

Client

Westland



HEATHER PLACE

Overview

A six storey, wood-framed structure with a mix of studio, one, two, and three-bedroom units.

Sustainable/Energy Target

Step Code 4

Client

BC Housing



RESIDENTIAL



PITT MEADOWS

Overview

The design and construction of a an affordable rental housing complex with an integrated childcare facility.

Size

10,637 m²

Client

Metro Vancouver Housing Corporation



WELCHER AVENUE

Overview

The design and construction of a 4-storey, 50 unit, multi-family, affordable development.

Size

4,134 m²

Client

Metro Vancouver Housing Corporation



800 COMMERCIAL DRIVE

Overview

Design services for 92 units of community focused and affordable housing.

Size

8,361 m²

Client

VAHA & BC Housing



RESIDENTIAL



STAINSBURY APARTMENTS

Overview

The design and construction a 5-storey residential building with 80 rental units in Vancouver, BC.

Size

5,750 m²



CAMBIE ST CORRIDOR

Overview

A new 4-storey multi-family residential building.

Sustainable/Energy Target

LEED Gold Certification

Client

BTY Group



NEW HAZELTON TRANSITIONAL & 2ND STAGE HOUSING

Overview

12-units including a 6 bedroom transitional home for women and children and 6 townhouses for 2nd stage housing in New Hazelton, BC.

Client

Northern Society for Domestic Peace



TRANSPORTATION



SURREY-LANGLEY SKYTRAIN

Overview

Provision of electrical design services for 5 stations and management of the overall design of all 8 stations for the SLS 16km extension.

Client

TransLink



BURRARD SKYTRAIN STATION UPGRADE

Overview

The design of the backbone wiring and electrical infrastructure for TransLink's internal systems.

Client

TransLink



VICTORIA TRANSIT CENTRE

Overview

Design services for the Victoria Regional Transit System's security and facility upgrades.

Client

BC Transit



INDIGENOUS



TSESHAHT FIRST NATION COMMUNITY HALL

Overview

Two-storey building with a full kitchen, storage space, patios, etc.

Size

650 m²

Client

Tseshah First Nation



OKIB CULTURAL IMMERSION SCHOOL

Overview

New school including admin areas, a gym, classrooms, a library, etc.

Size

2,347 m²

Client

Okanagan Indian Band



TL'AZT'EN NATION MIDDLE RIVER HEALTH CENTRE

Overview

Single storey, wood-framed with exam room, first aid room, lobby, etc.

Size

227 m²

Client

Tl'azt'en Nation



EDUCATIONAL



TA'TALU ELEMENTARY SCHOOL

Overview

The design and construction of a new 3-storey elementary school.

Size

5,965 m²

Client

School District No. 36 (Surrey)



UBC FOOD & BEVERAGE INNOVATION CENTRE

Overview

Includes food + beverage processing area, labs, packing area, brewery, etc.

Size

766 m²

Client

UBC Properties Trust



SFU LIBRARY LIGHTING REDESIGN

Overview

The interior renovation of SFU WAC Library 5000 Level.

Client

Simon Fraser University



HEALTHCARE



RICHMOND URGENT & PRIMARY CARE CENTRE

Overview

Schematic & detailed design services for Richmond's new UPCC.

Size

929 m²

Client

Vancouver Coastal Health



NOAKES & OUTPATIENTS PEDIATRICS

Overview

Relocation of these programs from RGH to a new space at Gilbert Rd.

Size

210 m²

Client

Fraser Health Authority



RICHMOND HOSPITAL - CLINIC RELOCATION

Overview

Relocation of the hand clinic from the hospital ground floor to the cast clinic on the ground floor.

Client

Vancouver Coastal Health





CITY OF VANCOUVER WEST ANNEX RENOVATION

Overview

A tenant improvement on the 4th floor of the West Annex Building.

Size

929 m²

Client

City of Vancouver



RCMP PORT MOODY TENANT IMPROVEMENT

Overview

The design of office and laboratory space at the RCMP Port Moody detachment.

Client

Royal Canadian Mountain Police



CROFTON FIRE HALL RENOVATIONS & ADDITION

Overview

Redevelopment of the existing fire hall and addition of a new wing to provide support functions.

Client

District of North Cowichan



SUSTAINABILITY



CARBON ENGINEERING INNOVATION CENTRE

Overview

Carbon Engineering's new head office and innovation centre.

Size

1,233 m²

Client

Carbon Engineering



LULULEMON PHOTOVOLTAIC INSTALLATION

Overview

Engineer of Record for the newly installed solar array system.

Size

2,592 solar panels

Client

Shift Energy Group



CITY OF COQUITLAM GREEN FLEET STRATEGIC PLAN

Overview

The development of a GFSP for the City's existing and future fleet-related efforts and operations.

Client

City of Coquitlam



RECREATIONAL



CITY OF VANCOUVER WEST ANNEX RENOVATION

Overview

A tenant improvement on the 4th floor of the West Annex Building.

Size

929 m²

Client

City of Vancouver



CHUCK BAILEY RECREATION CENTRE EXPANSION

Overview

The design and construction of the City Centre Sports Complex expansion.

Size

4,645 m²

Client

City of Surrey



PROPHET RIVER ICE RINK

Overview

The design and construction of a 3/4 NHL sized rink within an exterior, covered building.

Client

Prophet River First Nation



EV CHARGING



BCRTC OMC1 - EV CHARGERS

Overview

The installation of chargers at the Skytrain Operations & Maintenance Centre 1 (OMC1).

Client

British Columbia Rapid Transit Company (BCRTC)



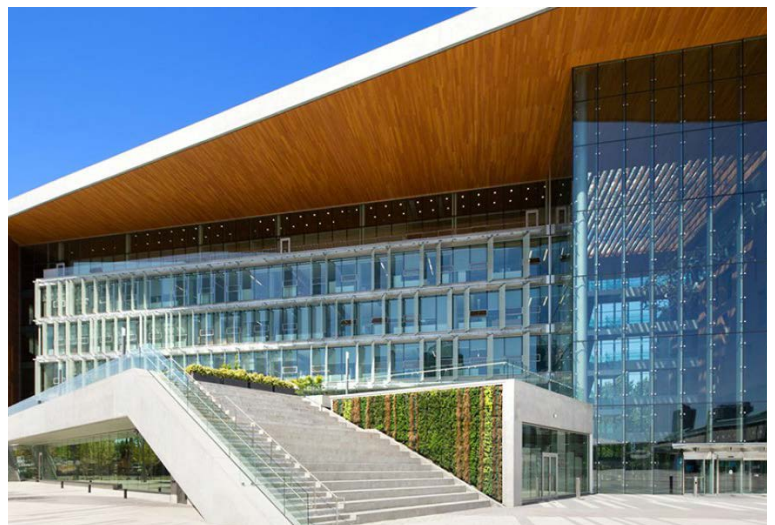
SURREY CITY HALL STAFF & FLEET EV INSTALLTION

Overview

The design and installation of new chargers, wheel stops, and circuits for staff and fleet.

Client

City of Surrey



VCH - EV CHARGERS DESIGN SERVICES

Overview

The design services for EV charging stalls at six Vancouver Coastal Health locations.

Client

Vancouver Coastal Health



MARKET SECTORS



Residential
Transportation
Commercial

Education
Healthcare
Indigenous

Civic & Cultural
Light Industrial
Governmental

Data Centres
Recreational
Hospitality & Retail

OUR CLIENTS INCLUDE





O'M Engineering
Electrical & Electronic
Consulting Engineers

omengineering.ca 

(236) 521 6900 | (778) 628-2550 

info@omengineering.ca 

O'M Engineering 

@omengineering_van 